

Distr.
LIMITED

E/ESCWA/SDD/2009/Technical Paper.7
13 October 2009
ORIGINAL: ARABIC

()

09-0419

"

()

"

(1)

(3)

(2)

				24-15	(1)
	60.5	2006 /			(2)
25.3			80	39.3	
/ 26					(3)
				2009 / 5	

(24-15)

14

2005

68

2005 1950

.1950

2040

88

.2005

20

-1

2040 1950

(%) 24-15	() 24-15	()	
18.72	14 343	76 613	1950
18.22	15 721	86 276	1955
17.71	17 329	97 867	1960
17.82	19 853	111 415	1965
18.67	23 873	127 866	1970
19.31	28 430	147 207	1975
19.47	33 699	173 087	1980
19.63	39 635	201 904	1985
19.50	45 171	231 697	1990
19.89	51 882	260 796	1995
20.74	60 469	291 551	2000
20.93	67 867	324 189	2005
19.89	71 472	359 273	2010
18.56	73 127	394 035	2015
17.88	76 592	428 440	2020
17.62	81 396	461 823	2025
17.40	85 854	493 305	2030
16.81	87 938	523 010	2035

20.79	88 070	423 547	2040
-------	--------	---------	------

<http://esa.un.org/unpp/index.asp?panel=2>.

:

(4)

(5)

(2)

(2008 -1998)

-2

	()	()	()	()	
	2006-2000	2007-1998	2008-1998	2008-1998	
40 371	2 990	37 010	0	371	
20 319	3 365	3 867	11 883	1 204	
70 809	16 230	9 419	3 284	41 876	
31 503	4 455	25 485	424	1 139	
49 541	9 985	38 926	251	379	
1 565	1 200	0	116	249	
49 602	11 355	37 898	168	181	
2 985	1 085	1 887	13	0	
76 371	6 870	60 250	7 312	1 939	
707 776	14 800	38 469	77 987	576 520	
10 560	270	2 378	68	7 980	
33 962	6 495	27 365	102	-	
147 668	12 640	122 388	12 640	0	
1 243 032	91 740	405 342	114 112	631 838	

(4)

<http://siteresources.worldbank.org/INTMENAINARABIC/> :

.2009

[.Resources/Shaping_Future_Overview-ARB.pdf](#)

(5)

<http://extranjeros.mtas.es/es/InformacionEstadistica/Anuarios/Anuario2008.htm> 2008

() : _____

<http://www.istat.it> .

()

<http://www.dhs.gov/files/statistics/data> .

()

www.statcan.gc.ca .

()

15 8

15

(6)

(7)

(3) 2008

2008

(2008)

-3

48.72	322 650	14.82	662 246	4 473 499	
49.40	138 850	15.67	281 092	1 794 229	
51.72	7 562	11.90	14 621	122 840	
44.20	16 832	14.40	38 078	264 460	
35.20	5 503	11.00	15 632	142 575	
50.52	101 758	15.10	201 431	1 333 886	
42.22	687	8.03	1 627	20 272	

<http://www.statcan.gc.ca/start-debut-eng.html> :

(6)

(7)

43.33	26	3.26	60	1 839	:
45.50	51 325	8.43	109 434	785 810	
60.00	48	7.80	80	1 025	
40.16	51	7.30	127	1 740	
50.81	1 920	7.73	3 779	48 919	

() 3

46.89	98	9.77	209	2 140	
46.51	40	10.57	86	814	
39.29	11	6.59	28	425	
42.73	47	8.17	110	1 346	
41.83	64	5.36	153	2 858	
46.81	48 808	14.53	104 266	717 416	
39.93	238	6.53	596	9 127	

[.http://extranjeros.mtas.es](http://extranjeros.mtas.es) 2008

: _____

:

.

.

.

.

.

.

.

.

.

() ()

() -1

: _____ ()

.(1)

(8)

: _____ ()

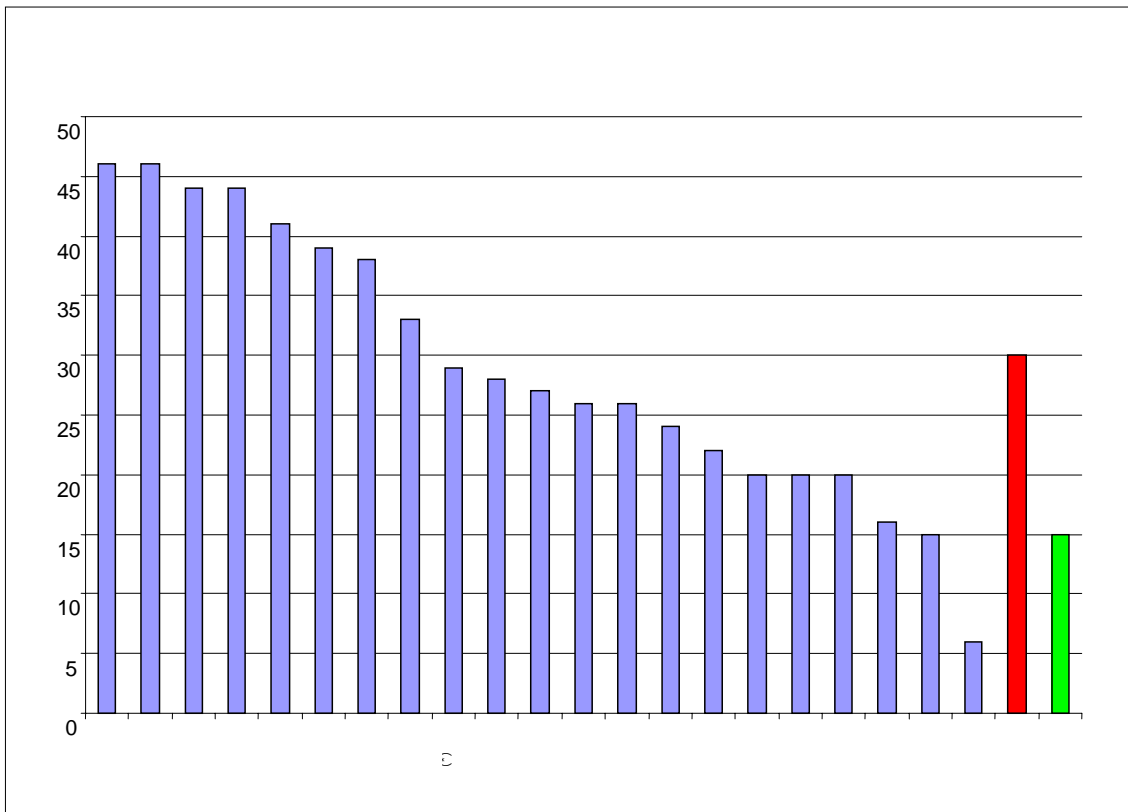
30.6

45

2005 (8)

(2006)

-1



2009

.2009

(*)

_____ ()

_____ ()

20

2006 .2003

(9)

_____ () -2

2009

_____ (9)

: _____ ()

(10)

58

115

: _____ ()

(<http://www.anapec.org>)

<http://esa.un.org/migration>

(10)

: _____ ()

